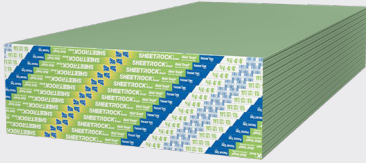


# SHEETROCK® BRAND MOLD TOUGH® PANELS FIRECODE® TYPE C



## FEATURES & BENEFITS

### 12.7 mm and 15.9 mm Type C wallboard with moisture and mold resistance

- 12.7 mm and 15.9 mm Type C moisture and mold-resistant panels for use on walls and ceilings
- Specially formulated mineral core that provides superior fire resistance for ceiling applications
- Feature a noncombustible, moisture- and mold-resistant gypsum core encased in moisture- and mold-resistant, 100% recycled green face and brown back papers.
- Underwriters Laboratories Inc. (UL) Classification as to fire resistance, surface-burning characteristics and noncombustibility
- Comply with ASTM C1396, Standard Specification for Gypsum Board, for 12.7 mm and 15.9 mm Type X, water-resistant gypsum wallboard and exterior gypsum soffit board
- Achieved GREENGUARD Gold Certification and qualifies as a low VOC emitting material (meets CA 01350)

## DESCRIPTION

USG Sheetrock® Brand Mold Tough® Panels Firecode® Type C are available in 12.7 mm and 15.9 mm thicknesses. These panels feature a noncombustible, moisture and mold-resistant gypsum core that is encased in moisture- and mold-resistant, 100% recycled green face and brown back papers. When tested in accordance with ASTM D3273, Standard Test Method for Resistance to Growth of Mold on the Surface of Interior Coatings in an Environmental Chamber, the panels meet or exceed ASTM C1396 specifications. The long edges of the panels are tapered, allowing joints to be reinforced and concealed with USG Sheetrock® Brand joint treatment systems. The panels are UL Classified for fire resistance and can be used in any UL Design in which Type C panels are listed. On the face along the long edge of each panel, the UL Type Designation is printed for easy identification by building inspector

## INTENDED FOR

- Commercial or residential applications where Type C panels are required
- New or repair and remodel construction
- Fire-rated wall and ceiling assemblies
- Single-layer, fire-rated ceiling assemblies with insulation in the plenum
- Protected exterior soffit and ceiling applications
- Protection of load-bearing and non-load-bearing wood- or steel-framed fire-rated walls

## LIMITATIONS

1. Avoid exposure to sustained temperatures exceeding 50°C.
2. Avoid exposure to excessive, repetitive or continuous moisture before, during and after installation. Eliminate sources of moisture immediately.
3. Must be stored off the ground and under cover in accordance with Gypsum Association's Handling and Storage of Gypsum Panel Products (GA-801).
4. Not suitable for use as a substrate for tile in wet areas such as tubs and showers, gang showers and other areas subject to direct water exposure.
5. Use as a tile substrate is limited to tile installed according to the most current TCNA and ANSI specifications. Please consult with the adhesive and tile manufacturers for their recommendations for maximum size and weight parameters for use with gypsum board.
6. Not recommended for exterior soffits and ceilings which project upwards and away from the building proper.

## INTERIOR INSTALLATION

Sheetrock® Brand Mold Tough® Panels Firecode® Type C install and finish just like standard 12.7 mm and 15.9 mm USG Sheetrock® Brand gypsum panels.

### Maximum Frame Spacing Drywall Construction

Direct Application	Panel Thickness	Location	Application Method <sup>1</sup>	Maximum Frame Spacing OC <sup>2</sup>
Single-layer	12.7 mm	Ceilings	Perpendicular	600 mm
			Parallel <sup>3</sup>	400 mm
	Sidewalls	Parallel or perpendicular	600 mm	
		Parallel <sup>3</sup>	400 mm	
15.9 mm	Ceilings	Perpendicular	600 mm	
	Sidewalls	Parallel or perpendicular	600 mm	
Double-layer	12.7 mm	Ceilings	Parallel or perpendicular	600 mm
		Sidewalls	Perpendicular	600 mm
	15.9 mm	Ceilings	Parallel or perpendicular	600 mm
		Sidewalls	Perpendicular	600 mm

**Notes:**

1. Long edge position relative to framing.
2. Consult USG Middle East technical team for the framing spacing if fire rating required.
3. Not recommended if water-based texturing material is to be applied.

## FINISHING AND DECORATING

For priming and decorating with paint, texture, or wallcovering, follow manufacturer's directions for materials used. All surfaces, including applied USG Middle East Sheetrock® Brand All Purpose Joint Compound, must be thoroughly dry, dust free, and not glossy. A prime coat of Sheetrock® Tuff-Hide Primer-Surfacer should be applied and allowed to dry before decorating when a Level 5 finish is required. To improve fastener concealment, where gypsum panel walls and ceilings will be subjected to strong artificial or natural side lighting and/or decorated with a gloss paint (eggshell, semi gloss, or gloss), the gypsum panel surface should be skim-coated with USG All Purpose Joint Compound or primed with Sheetrock® Tuff-Hide Primer-Surfacer to equalize suction before painting.

For priming and decorating with paint, texture, or wallcovering, follow manufacturer's directions for materials used. All surfaces, including applied USG Middle East Sheetrock® Brand All Purpose Joint Compound, must be thoroughly dry, dust free, and not glossy. A prime coat of Sheetrock® Tuff-Hide Primer-Surfacer should be applied and allowed to dry before decorating when a Level 5 finish is required. To improve fastener concealment, where gypsum panel walls and ceilings will be subjected to strong artificial or natural side lighting and/or decorated with a gloss paint (eggshell, semi gloss, or gloss), the gypsum panel surface should be skim-coated with USG All Purpose Joint Compound or primed with Sheetrock® Tuff-Hide Primer-Surfacer to equalize suction before painting.

## PRODUCT DATA

	UL Type C	
	Sheetrock® Brand Mold Tough® Panels Firecode® Type C	
Thickness	12.7 mm	15.9 mm
Lengths	2440 mm - 3660 mm	2440 mm - 3660 mm
Width <sup>1</sup>	1220 mm	1220 mm
Weight <sup>2</sup> , nominal	11.2 kg/m <sup>2</sup>	12.3 kg/m <sup>2</sup>
Edges	Tapered	Tapered
Packaging	Two panels per bundle	Two panels per bundle

**Notes:**

1. Other sizes available by special order.
2. Represents approximate weight for design and shipping purposes.

## COMPLIANCE

- Comply with ASTM C1396 for 12.7 mm and 15.9 mm Type X, water resistant gypsum wallboard and exterior gypsum soffit board
- Classified as a Class A Interior Finish Material per Section 803.1 of the International Building Code® (IBC®)
- UL Classification as to fire resistance, surface-burning characteristics and core combustibility
- Achieved GREENGUARD Gold Certification and qualifies as a low VOC emitting material (meets CA 01350)

**Notice:**

As we are involved in constant products development; this document information is subject to change without prior notice. Please always refer to [usgme.com](http://usgme.com) for the updated products information document.

©2020 Factory of USG Middle East LTD. Co. All rights reserved.

