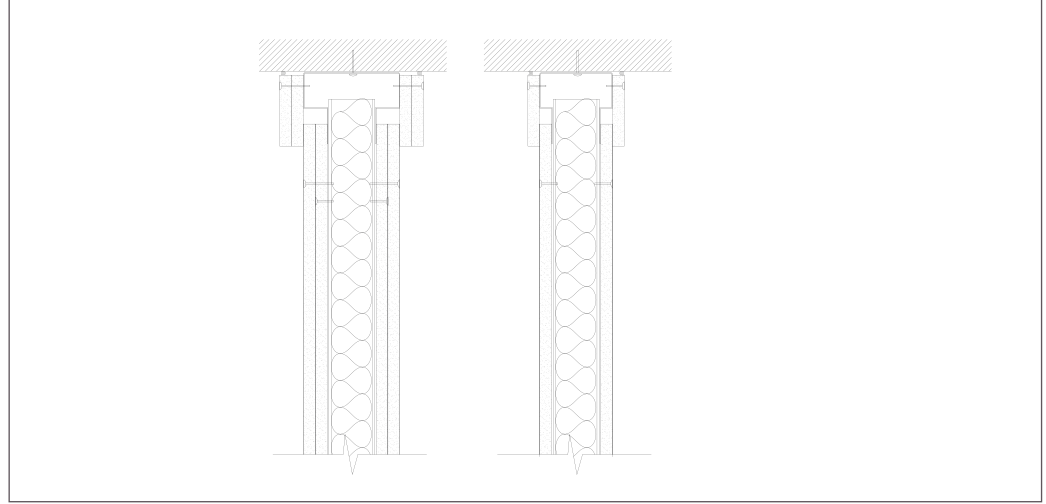


# DEFLECTION TRACK - T SHAPE



**PRODUCT CATEGORIES:**  
**WALL TRACK**

- Used in Fire Rated wall assemblies allowing for vertical deflection of floor beams or floor decks above the interior partitions
- Custom made Flange depth varying from 60 to 100 mm is suitable for vertical deflection movement exceeding 30 mm
- Used for a wall height that is above 3.5m
- Used to achieve 1, 2 and 3 hours fire rated in wall assemblies

**MATERIAL PROPERTIES**

Yield stress, Fy 41 ksi Ultimate, with G90 Zinc coating

**GEOMETRIC PROPERTIES**

	Dimension (mm)
Designed Thickness Flange	from 0.90 to 16 mm
Depth	60, 75, 90 and 100 mm
Web Depth	64, 92 , 100 & 150 mm
Deflection Groove	16 & 32 mm

**ASTM & CODE STANDARDS**

- USG Deep Deflection Tracks double sided - Narrow and wide are produced to meet or exceed ASTM C645 and C955
- Galvanized sheet steel meets or exceeds requirements of ASTM A-653
- For installation & storage information refer to ASTM C1007 & C754

**GREEN BENEFITS**

LEED Credit MR 2 – USG products are manufactured from cold-formed steel. Steel is 100% recyclable, which helps divert debris from the waste stream.

LEED Credit MR 4 – USG’s steel products have a minimum of 25.5% postconsumer recycled content, and 6.8% pre-consumer.

**REFERENCES**

For further health and safety instructions, refer to the Safety Data Sheet (SDS) for this product, available from your USG Middle East sales office or [USGme.com](http://USGme.com)

**Notice:**

As we are involved in constant products development; this document information is subject to change without prior notice. Please always refer to [usgme.com](http://usgme.com) for the updated products information document.

©2022 Factory of USG Middle East LTD. Co. All rights reserved.