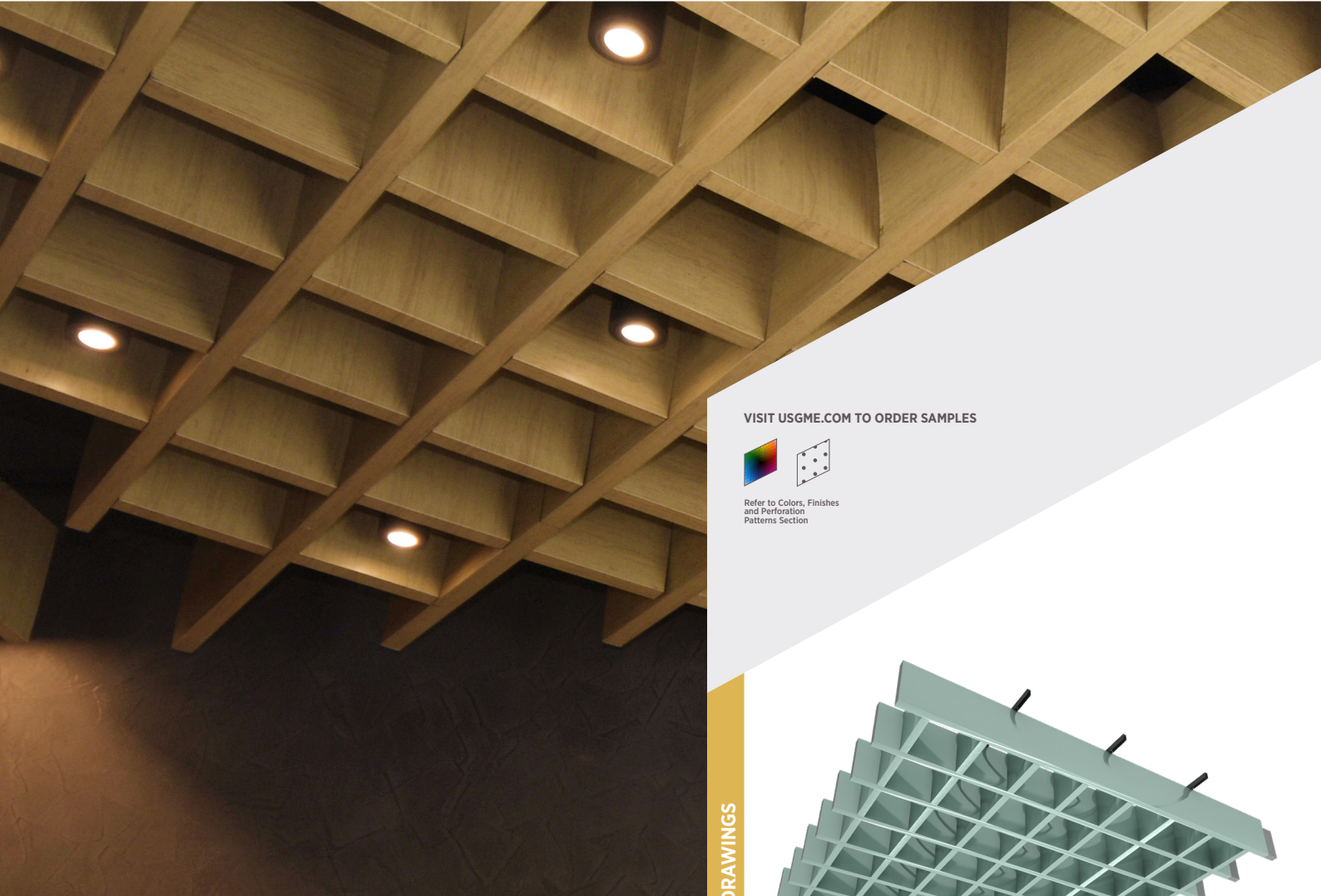


CELEBRETTO® CROSSING BAFFLES

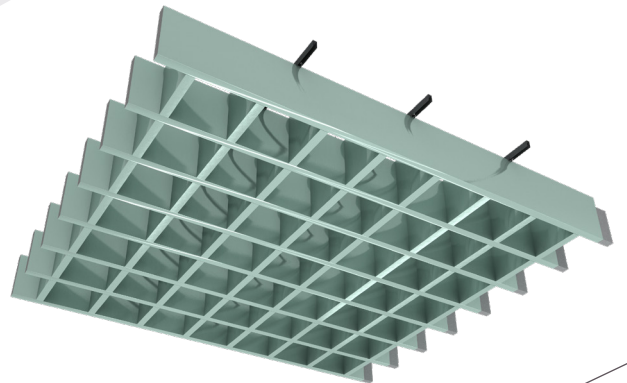


VISIT USGME.COM TO ORDER SAMPLES



Refer to Colors, Finishes
and Perforation
Patterns Section

CROSSING BAFFLE DRAWINGS



FEATURES AND BENEFITS

- Available in a wide range of system sizes with different baffles dimensions and finishes, as per a project's requirements.
- Unique modern look that fits any interior design concept.
- Available in plain and perforated pattern for acoustic performance.
- Special design - metal baffle integrated with metal lay-in ceiling or mineral fiber ceiling to improve the space aesthetic and acoustic performance.

APPLICATIONS

- Airports
- Business & residential towers
- Hotels
- Entertainment Hallways
- Restaurants

Sound Absorption

Frequency, Hz	125	250	500	1000	2000	4000	NRC*
A1 Pattern Fully Perforated**	0.25	0.50	1.0	1.0	1.0	1.0	0.85

* Calculated to ASTM C 423-01

** Acoustic Fleece and 38mm Soft Fiber Infill



CROSSING BAFFLES



HIGH SOUND ABSORPTION

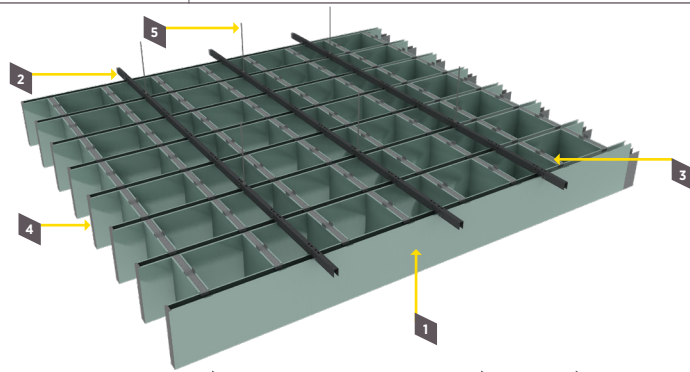


CEILING ATTENUATION CLASS

CROSSING BAFFLES CEILING SYSTEM COMPONENTS

Main Baffle with Connector and End Cap	Crossing Baffle with Suspension	Carrying Channel With Connector
Hanging System		

SYSTEM DRAWINGS



1 Main Baffle 2 Carrying Channel Connecting Splice 3 Crossing Baffle Connecting Splice 4 End Cap 5 Hanging System

SYSTEM SPECIFICATION

Material Classification

Galvanized Steel: Type V
Aluminium: Type VII
Stainless Steel: Type VI
Pattern: A, C, G

Thickness

Powder coat finish: 0.6mm - 1.4mm
Wooden finish: 0.6mm

Baffle Width

30mm/40mm/50mm/80mm/100mm/150mm

Baffle Height

50mm/80mm/100mm/150mm/200mm

Baffle Length

Up to 2400mm

Baffle Spacing (clear gap)

Min 30mm

Light Reflectance Coefficient [LR]

Based on the finish color and perforation pattern, LR up to 0.82

Color

Standard colors are RAL 9016, RAL 9006 and RAL9010.
Other RAL colors are available upon request

Surface Burning Characteristics per ASTM E 84

Class A

Additional Information

- Recommended spacing is to be equal to the height of the baffle
- Thickness depends on panel sizes and project requirements
- Consult factory for other panel widths

ITEM CODIFICATION

Main Baffle

SCBM-402007WF4



Crossing Baffle

SCBC-402003007WF4



Carrying Channel

CC403006R05



CROSSING BAFFLES



HIGH SOUND ABSORPTION



CEILING ATTENUATION CLASS

CROSSING BAFFLES
METAL CEILING
ACOUSTICAL
PERFORMANCE

USG Middle East supplies Metal Ceiling panels with a range of acoustical performance to meet the needs of all kinds of projects. A variety of sound-absorbing backing options are available. Consult with the USG Middle East technical team for further guidance.

PATTERN	OPEN AREA%	CELEBRETTO® METAL CEILING INFILL OPTIONS	CAC	NRC
A1	20%	Paraline Baffles with 38mm Soft Fiber infill	-	0.85

• A1 Pattern: Diagonal Pattern, Hole Size Dia 1.8mm

INFILL OPTIONS*

STANDARD
WITH PLAIN BORDER

Plain	Acoustic Fleece	Acoustic Fleece and Soft Fiber

OPTIONAL
FULLY PERFORATED

* Additional backer options available for NRC and CAC enhanced total acoustical performance

Notice:

As we are involved in constant products development; this document information is subject to change without prior notice. Please always refer to usgme.com for the updated products information document.

©2023 Factory of USG Middle East LTD. Co. All rights reserved.

